



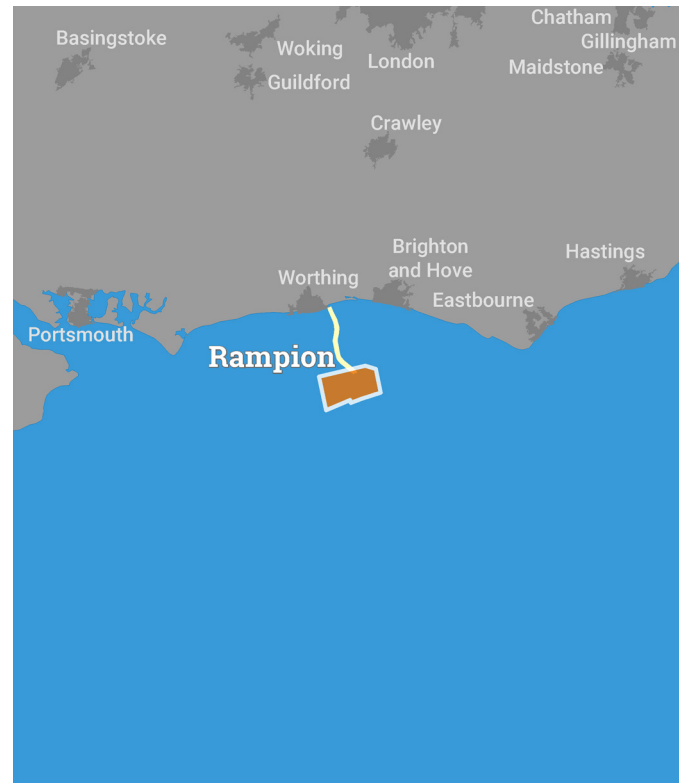
Kingfisher Wind farms chart

seafish
Kingfisher Information

Rampion offshore wind farm
January 2021

Description

The Rampion Offshore Wind Farm is operated by RWE Renewables. It is situated approximately 13 km from shore in the English Channel, off the Sussex coast. The wind farm is fully operational and has 116 turbines, a total capacity of 400.2 MW and covers an area of approximately 79 km².



Emergency procedures

1. If you suspect you have snagged a subsea cable or renewable energy structure, DO NOT endanger your vessel and crew by attempting to recover your gear.
2. Carefully plot your vessel's position as accurately as possible.
3. Advise the Coastguard of your situation, and call the 24 hour Emergency Number and state that an incident is occurring concerning a subsea cable or renewable energy structure.

Reducing the risks whilst fishing

To reduce the risks of fishing near offshore structures, it is essential to be up to date with KIS-ORCA information. KIS-ORCA information is easy to install on your vessel's fishing plotter and ensures skippers are able to make informed decisions for their safety.

The closer to the surface a subsea cable is lifted when fouled by fishing gear, the more danger there is to the fishing vessel. In the interests of fishing safety and to prevent damage to subsea structures, fishermen are advised to exercise caution when fishing in the vicinity of subsea cables and renewable energy structures. Loss of gear, fishing time and catch can result if a trawler snags a subsea structure and there is serious risk of loss of life.

Emergency contact number +44(0)845 3014712



**Rampion
Offshore Wind Farm**

- Key**
- Site boundary
 - Wind turbine
 - Substation
 - Export cable
 - Inter array cable
 - Out of Use cable

Grey coloured features displayed on this chart represent additional offshore wind farm structures. Visit www.kis-orca.eu/map for more info.

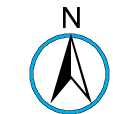
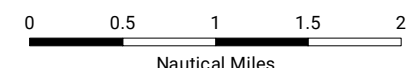


Projection: World_Mercator
Spheroid: GCS_WGS_1984
Datum: D_WGS_1984

This data is issued as a guide only. Seafish, cable / structure owners and Distributors accept no responsibility for any inaccuracies however caused.

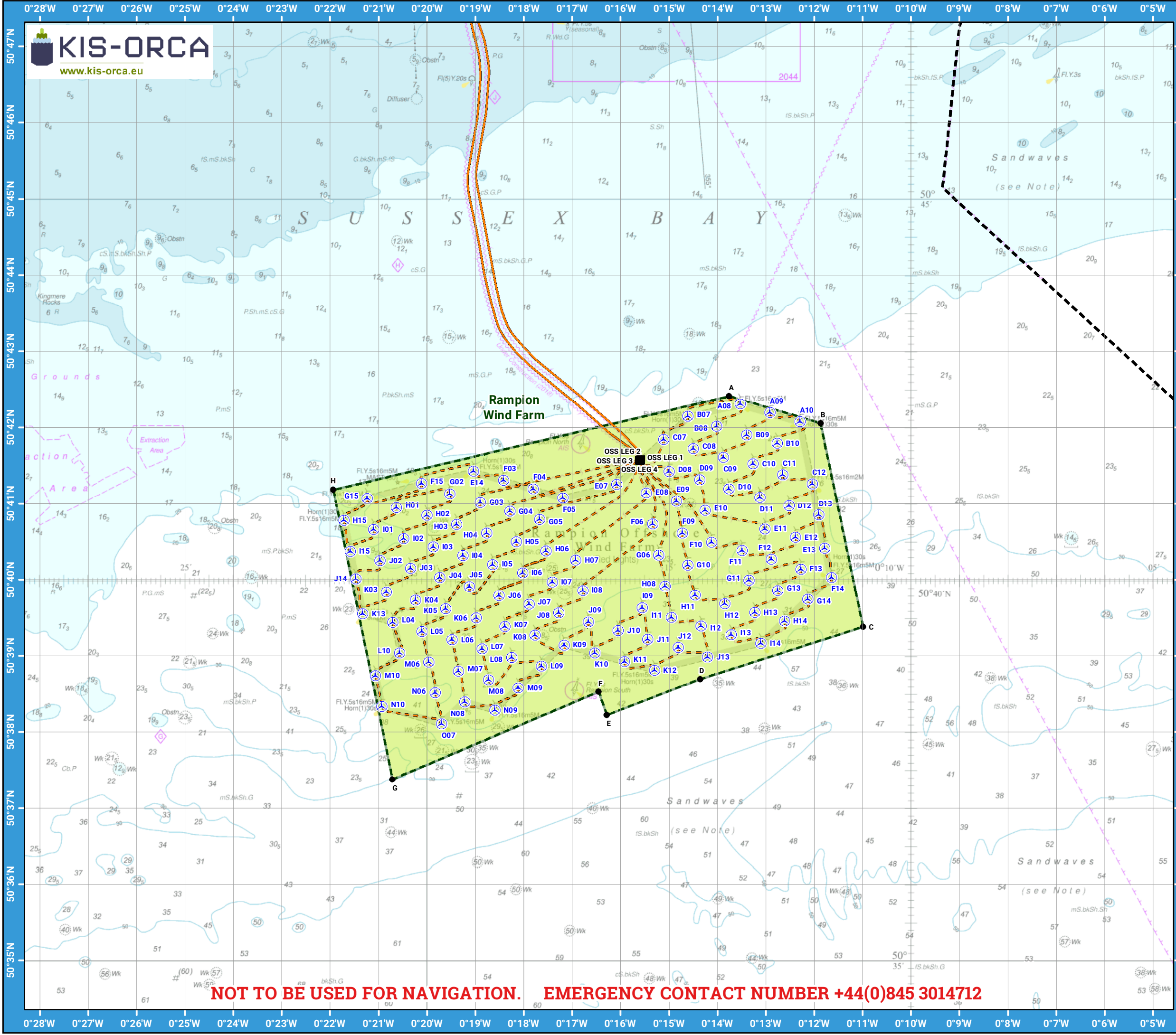
Please be aware that other structures & cables may exist in addition to those shown on this chart.

©Crown Copyright and/or database rights. Reproduced by permission of the Controller of Her Majesty's Stationery Office and the UK Hydrographic Office (www.GOV.uk/UKHO).



Scale @ A3:
1:75,000

NOT TO BE USED FOR NAVIGATION. EMERGENCY CONTACT NUMBER +44(0)845 3014712



Asset locations

Extents

A	50°42.414'N 00°13.762'W
B	50°42.056'N 00°11.863'W
C	50°39.385'N 00°10.990'W
D	50°38.698'N 00°14.352'W
E	50°38.222'N 00°16.285'W
F	50°38.530'N 00°16.450'W
G	50°37.380'N 00°20.706'W
H	50°41.189'N 00°21.931'W

Infrastructure

OSS LEG 1	50°41.581'N 00°15.579'W
OSS LEG 2	50°41.569'N 00°15.575'W
OSS LEG 3	50°41.565'N 00°15.599'W
OSS LEG 4	50°41.578'N 00°15.603'W

Turbines

A08	50°42.312'N 00°13.524'W
A09	50°42.196'N 00°12.909'W
A10	50°42.080'N 00°12.286'W
B07	50°42.149'N 00°14.604'W
B08	50°42.021'N 00°14.009'W
B09	50°41.904'N 00°13.393'W
B10	50°41.796'N 00°12.763'W
C07	50°41.845'N 00°15.107'W
C08	50°41.728'N 00°14.495'W
C09	50°41.611'N 00°13.876'W
C10	50°41.525'N 00°13.258'W
C11	50°41.382'N 00°12.645'W
C12	50°41.262'N 00°12.034'W
D08	50°41.428'N 00°14.994'W
D09	50°41.318'N 00°14.365'W
D10	50°41.197'N 00°13.759'W
D11	50°41.088'N 00°13.120'W
D12	50°40.976'N 00°12.518'W
D13	50°40.856'N 00°11.903'W
E07	50°41.258'N 00°16.079'W
E08	50°41.147'N 00°15.465'W
E09	50°41.038'N 00°14.839'W
E10	50°40.919'N 00°14.249'W
E11	50°40.675'N 00°13.011'W
E12	50°40.565'N 00°12.385'W
E13	50°40.422'N 00°11.785'W
E14	50°41.430'N 00°19.031'W
F03	50°41.315'N 00°18.412'W
F04	50°41.201'N 00°17.796'W
F05	50°41.081'N 00°17.184'W
F06	50°40.738'N 00°15.334'W

Turbines

F09	50°40.620'N 00°14.721'W
F10	50°40.496'N 00°14.117'W
F11	50°40.392'N 00°13.487'W
F12	50°40.275'N 00°12.886'W
F13	50°40.148'N 00°12.273'W
F14	50°40.040'N 00°11.644'W
F15	50°41.268'N 00°20.108'W
G02	50°41.133'N 00°19.522'W
G03	50°41.021'N 00°18.892'W
G04	50°40.906'N 00°18.283'W
G05	50°40.795'N 00°17.666'W
G06	50°40.329'N 00°15.208'W
G10	50°40.197'N 00°14.611'W
G11	50°40.001'N 00°13.341'W
G13	50°39.867'N 00°12.747'W
G14	50°39.750'N 00°12.130'W
G15	50°41.074'N 00°21.228'W
H01	50°40.955'N 00°20.623'W
H02	50°40.849'N 00°19.997'W
H03	50°40.731'N 00°19.381'W
H04	50°40.617'N 00°18.763'W
H05	50°40.504'N 00°18.151'W
H06	50°40.387'N 00°17.536'W
H07	50°40.266'N 00°16.920'W
H08	50°39.922'N 00°15.078'W
H11	50°39.805'N 00°14.460'W
H12	50°39.690'N 00°13.845'W
H13	50°39.576'N 00°13.226'W
H14	50°39.461'N 00°12.613'W
H15	50°40.783'N 00°21.711'W
I01	50°40.667'N 00°21.094'W

Turbines

I02	50°40.549'N 00°20.474'W
I03	50°40.439'N 00°19.866'W
I04	50°40.325'N 00°19.252'W
I05	50°40.208'N 00°18.637'W
I06	50°40.096'N 00°18.020'W
I07	50°39.978'N 00°17.406'W
I08	50°39.867'N 00°16.778'W
I09	50°39.636'N 00°15.551'W
I11	50°39.513'N 00°14.945'W
I12	50°39.398'N 00°14.330'W
I13	50°39.281'N 00°13.708'W
I14	50°39.169'N 00°13.099'W
I15	50°40.376'N 00°21.581'W
J02	50°40.259'N 00°20.964'W
J03	50°40.159'N 00°20.333'W
J04	50°40.036'N 00°19.729'W
J05	50°39.916'N 00°19.120'W
J06	50°39.800'N 00°18.505'W
J07	50°39.686'N 00°17.888'W
J08	50°39.568'N 00°17.274'W
J09	50°39.452'N 00°16.660'W
J10	50°39.336'N 00°16.044'W
J11	50°39.224'N 00°15.433'W
J12	50°39.114'N 00°14.801'W
J13	50°38.990'N 00°14.199'W
J14	50°40.020'N 00°21.467'W
K03	50°39.849'N 00°20.837'W
K04	50°39.737'N 00°20.228'W
K05	50°39.626'N 00°19.605'W
K06	50°39.504'N 00°18.982'W
K07	50°39.389'N 00°18.381'W

Turbines

K08	50°39.278'N 00°17.759'W
K09	50°39.148'N 00°17.164'W
K10	50°39.044'N 00°16.526'W
K11	50°38.932'N 00°15.916'W
K12	50°38.816'N 00°15.298'W
K13	50°39.560'N 00°21.320'W
L04	50°39.445'N 00°20.697'W
L05	50°39.326'N 00°20.101'W
L06	50°39.215'N 00°19.474'W
L07	50°39.099'N 00°18.859'W
L08	50°38.982'N 00°18.245'W
L09	50°38.871'N 00°17.629'W
L10	50°39.045'N 00°20.559'W
M06	50°38.925'N 00°19.958'W
M07	50°38.806'N 00°19.343'W
M08	50°38.689'N 00°18.727'W
M09	50°38.580'N 00°18.109'W
M10	50°38.744'N 00°21.057'W
N06	50°38.516'N 00°19.824'W
N08	50°38.398'N 00°19.216'W
N09	50°38.287'N 00°18.596'W
N10	50°38.338'N 00°20.926'W
O07	50°38.109'N 00°19.697'W



Contact us

+44 (0) 1472 252 307
kingfisher@seafish.co.uk
[@kingfisherinfo](https://twitter.com/kingfisherinfo)
www.kingfishercharts.org

Stay up to date: Always ensure you have the latest Kingfisher Bulletin and Offshore Fishing Plotter on-board